

ATDEC  
Desk



ATDEC  
Wall



ATDEC  
Ceiling



ATDEC  
Floor



Quick product guide to  
**Workspace  
Digital Signage  
& Retail**  
mounting solutions

# Workspace

All desk mounts feature 75x75 and 100x100 mounting hole patterns. Larger displays with 200x100 and 200x200 VESA patterns can be mounted using AC-AP-2020 adaptor plate (compatible will all Atdec desk mounts).



## Interactive | Adjustable from a seated position spring-assisted desk mounts



### AWM series modular mounts

Premium ergonomics, multi-user environments, agile offices, height adjustable desks.

Ordering code	Max load per display, lb	Configuration
AWMS-DB-C-S	20	Direct to desk spring-assisted monitor arm
AWMS-HXB-H-S	13-35	Heavy duty pring-assisted monitor arm
AWMS-D13-C-S	20	Spring-assisted monitor arm on 5.3" post
AWMS-D40-C-S	20	Spring-assisted monitor arm on 15.7" post
AWMS-2-D13-C-S	20	Dual spring-assisted monitor arm on 5.3" post
AWMS-2-D40-C-S	20	Dual spring-assisted monitor arm on 15.7" post
AWMS-2-ND13-C-S	20	Monitor/notebook combo dual monitor arm
AWMS-RHXB-H-S	4 - 15	Dual monitor crossbar spring-assisted arm

## Set & Forget | Ideal for spaces where frequent display height adjustment is not required



### Freestanding mounts

Ordering code	Max load per display, lb	Configuration
VFS-DH	26.5	2 x 1, side-by-side
VFS-DV	26.5	1 x 2, vertical stack
VFS-Q	26.5	2 x 2
SD-FS-T	17.6	3 x 1, side-by-side

### AWM series modular mounts

Upgradeable, custom configurations, up to 6 displays.

Ordering code	Max load per display, lb	Configuration
AWMS-4640-C-S	26.5	Single articulated monitor mount
AWMS-2-4640-C-S	26.5	Dual articulated monitor mount
AWMS-R40-H-S	15	Dual monitor crossbar mount
AWMS-3-13714-C-S	20	Triple monitor mount
AWMS-4-4675-H-S	26.5	Quad monitor mount

### AF series mounts

Perfect for basic ergonomic requirements, one user scenario fixed height desks. Up to 2 displays.



Ordering code	Max load per display, lb	Configuration
AF-AT-P	17.6	Single articulated arm monitor mount
AF-AT-D-P	17.6	Dual articulated arm monitor mount
AF-M-P	17.6	Single swivel arm monitor mount
AF-AT-NBC-P	17.6	Dual monitor/notebook combo mount
AF-AA-P	17.6	Additional monitor arm
AF-AN-P	17.6	Additional notebook arm
AF-P590-S		Optional 23.23" pole



# Digital signage

## Modular mounting solutions



### Menu board mounts



Max load per display: 110lb  
VESA: Flexible width  
From 100 to 400 high

Ordering code	Configuration	Type
ADBS-2x1-12TW	2 x 1, 49.2" rail	Wall
ADBS-2x1-12TC	2 x 1, 49.2" rail, 1 x 59.05" pole	Ceiling
ADBS-2x1-17TW	2 x 1, 68.9" rail	Wall
ADBS-2x1-17TC	2 x 1, 68.9" rail, 1 x 59.05" pole	Ceiling
ADBS-2x1-17T2C	2 x 1, 68.9" rail, 2 x 59.05" poles	Ceiling
ADBS-3x1-30TW	3 x 1, 118.1" rail, 2 x 59.05" poles	Wall
ADBS-3x1-30T3C	3 x 1, 118.1" rail, 3 x 59.05" poles	Ceiling
ADBS-4x1-39TW	4 x 1, 156.7" rail	Wall

### Video wall mounts

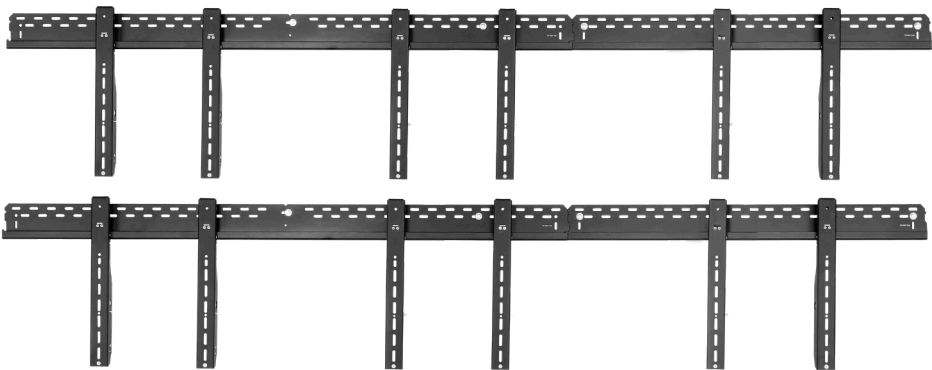
#### ADM-VWPS

Pop-out mount for modular video walls.  
Max load: 110lb  
VESA: From 200 to 600 wide  
From 100 to 400 high



#### Modular video wall mounting system

Landscape or Portrait installations  
Max load per display: 363lb VESA: Universal width  
From 200 to 400 high (TH-VWV brackets)  
From 200 to 800 high (TH-VWVP brackets)



Build your bespoke configuration using our  
**VIDEO WALL CONFIGURATOR**  
[atdec.com.au/video-wall-configurator](https://atdec.com.au/video-wall-configurator)

### Display stands



Max load per display: 110lb  
VESA: Flexible width  
From 50 wide to 400 high

Ordering code	Type	Configuration	Post height
ADBS-1-4FBB	Freestanding	1	70.87"
ADBS-1x2-4FCF	Floor-to-ceiling	1 x 2	122.79"
ADBS-2x2-17MFB	Freestanding	2 x 2	70.87"
ADBS-3x2-30MFB	Freestanding	3 x 2	70.87"

# Digital signage



## Wall mounts



### Fixed angle

Ordering code	Max load, lb	VESA	Distance from wall
TH-2250-VF	110	50x50, 75x75, 100x100, 120x180, 200x100, 200x200	0.65"
TH-3060-UF	110	100 to 600 wide, 100 to 400 high	1"
TH-3070-UFP	154	200 to 400 wide, 200 to 600 high	1.3"
TH-40100-UF	330	200 to 800 wide, 200 to 600 high	1.53"



### Tilt

Ordering code	Max load, lb	VESA	Distance from wall
SD-WD	55	75x75, 100x100	3.03"
AF-WD-P	17.6	75x75, 100x100	4.04"
TH-2250-VTP	66	50x50, 75x75, 100x100, 200x100, 200x200	3.25"
TH-3060-UT	110	100 to 600 wide, 100 to 400 high	2.3"
TH-3065-LPT	88	100 to 600 wide, 100 to 400 high	1.37"
TH-3070-UT	200	180 to 800 wide, 125 to 500 high	2.85"



### Full motion

Ordering code	Max load, lb	VESA	Distance from wall
AF-AT-W-P	17.6	75x75, 100x100	4.65" - 18.23"
SD-AT-DW-BK	20	75x75, 100x100	10.25" - 25"
TH-1040-VFL	77	100x100, 100x150, 200x100, 200x200	2.05" - 19.92"
TH-1040-VFM	55	75x75, 100x100, 200x100, 200x200	4.17" - 17.91"
TH-2050-VFM	77	100x100, 200x100, 200x200, 300x200, 300x300, 400x200, 400x300, 400x400	3.94" - 21.26"
TH-3060-UFL	77	200 to 700 wide, 100 to 500 high	1.95" - 24.6"

## Ceiling mounts



### TH-3070-CT

Medium to large displays.  
**Max load:** 143lb  
**VESA:** From 200 to 800 wide  
From 200 wide to 500 high



### TH-WH-PJ

Projector mounts.  
**Max load:** 33lb  
**Mounting hole pattern:** Universal compatibility

### TH-1040-CT

Small to medium displays.  
**Max load:** 55lb  
**VESA:** 75x75, 100x100, 200x100, 200x200

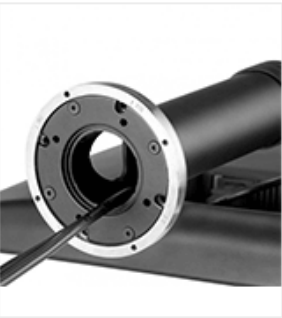
Ordering code	Max load, lb	Color	Pole length
TH-1040-CTS	55	Black	15.75" - 35.43"
TH-1040-CTL	55	Black	35.43" - 70.87"
TH-3070-CTS	143	Black	21.65" - 35.43"
TH-3070-CTL	143	Black	41.34" - 74.8"
TH-3070-CTLW	143	White	41.34" - 74.8"
TH-WH-PJ-CM	33	White	15.75" - 35.25"
TH-WH-PJ-FM	33	White	5"





# Retail

## Point of service mounts



### SD-POS

Secure and robust mount for public spaces.

**Max load:** 40lb per display

**VESA:** 75x75, 100x100

**Pole height:** Fixed 13" (SD-POS-VBM)  
12.99" to 17.72" (SD-POS-HA)

Ordering code	Description
SD-POS-HA	Height adjustable pole mount
SD-POS-HA-B2B	Second display enabler
SD-POS-VBM	Fixed 13" pole mount
SD-POS-VBM-B2B	Second display enabler



### SD-DP

Ideal for limited space counters.  
Up to 3 display configurations.

**Max load:** 26.5lb per display

**VESA:** 75x75, 100x100

**Pole height:** 16.5", 29.5" or 45.25" options

**Pole diameter:** 1.65"

Ordering code	Description
SD-DP-1150	45.25" pole with 1 donut
SD-DP-750	29.5" pole with 1 donut
SD-DP-420	16.5" pole with 1 donut
SD-DO	Additional donut style mount



## Point of sale mounts

Integrated POS mounts provide adjustable support for touch screen monitors, receipt printers, bar code scanners, keyboards and credit card terminals.

- Space saving and ergonomic
- Stable and security enhanced
- Configurable and upgradeable

